

Overview of Class Size and Composition in British Columbia Public Schools 2006/07

School District 046 Sunshine Coast

These class size data are current as of September 30, 2006 and have been verified by school districts.

PLEASE NOTE

The Ministry makes small and continuous improvements to the quality of its data. Sometimes these changes result in differences from previously published reports. The data in this report are the most accurate data available at time of publication.

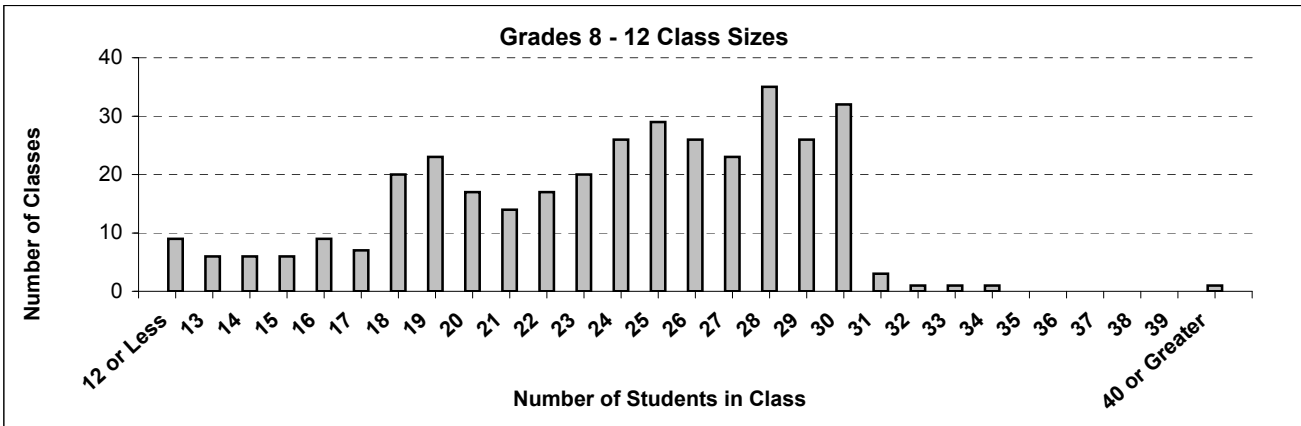
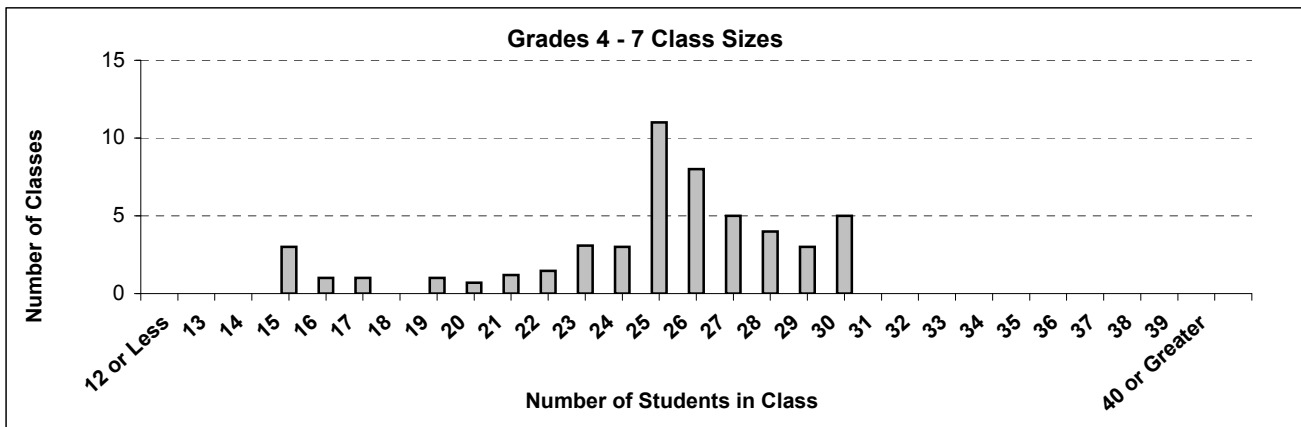
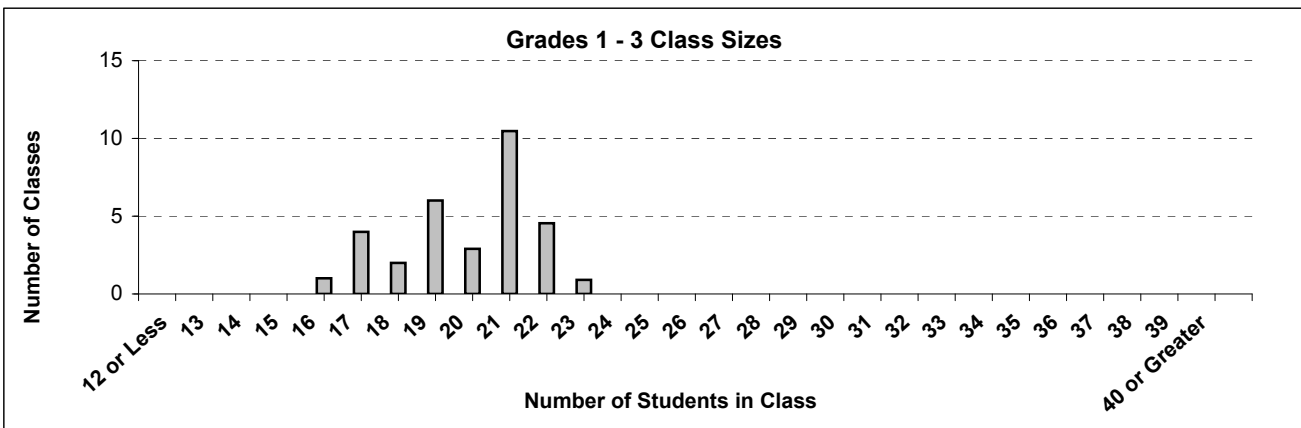
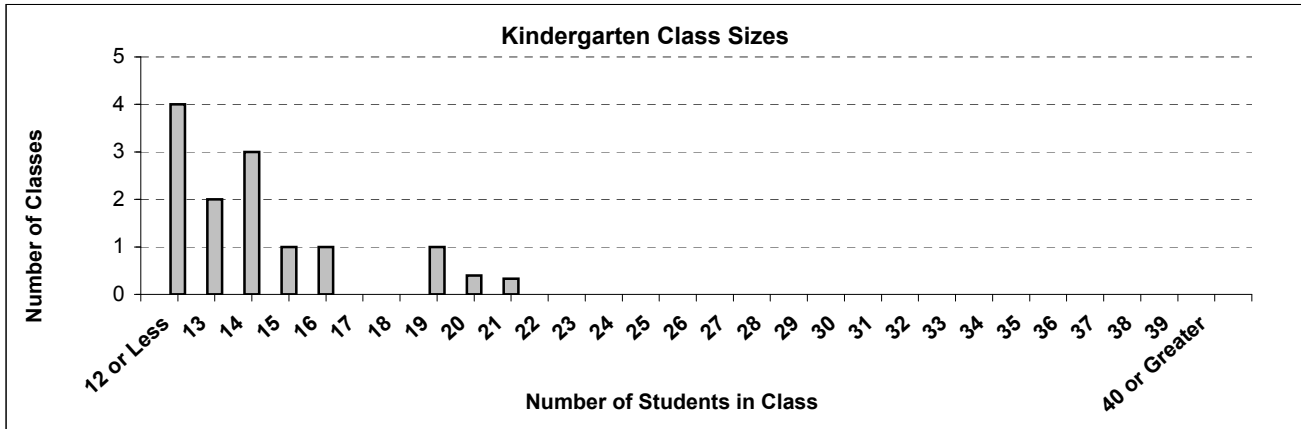
Ministry reports are available at <http://www.bced.gov.bc.ca/reporting/>

Contact the Analysis & Reporting Group, Information Department at educ.reportingunit@gov.bc.ca

District Class Sizes

046 Sunshine Coast

Source: Class size data collection (as of September 30) from standard BC public schools.



District - Average Class Size

046 Sunshine Coast

Source: Class size data collection (as of September 30) from standard BC public schools.

District - Average Class Size	Kindergarten	Grade 1 - 3	Grade 4 - 7	Grade 8 - 12
	13.3	19.9	24.8	23.6

Province - Average Class Size	Kindergarten	Grade 1 - 3	Grade 4 - 7	Grade 8 - 12
	17.5	20.3	25.8	24.4

Number of Reported Classes with Assigned Education Assistants	144
---	-----

Number of Reported Schools in School District	13
---	----

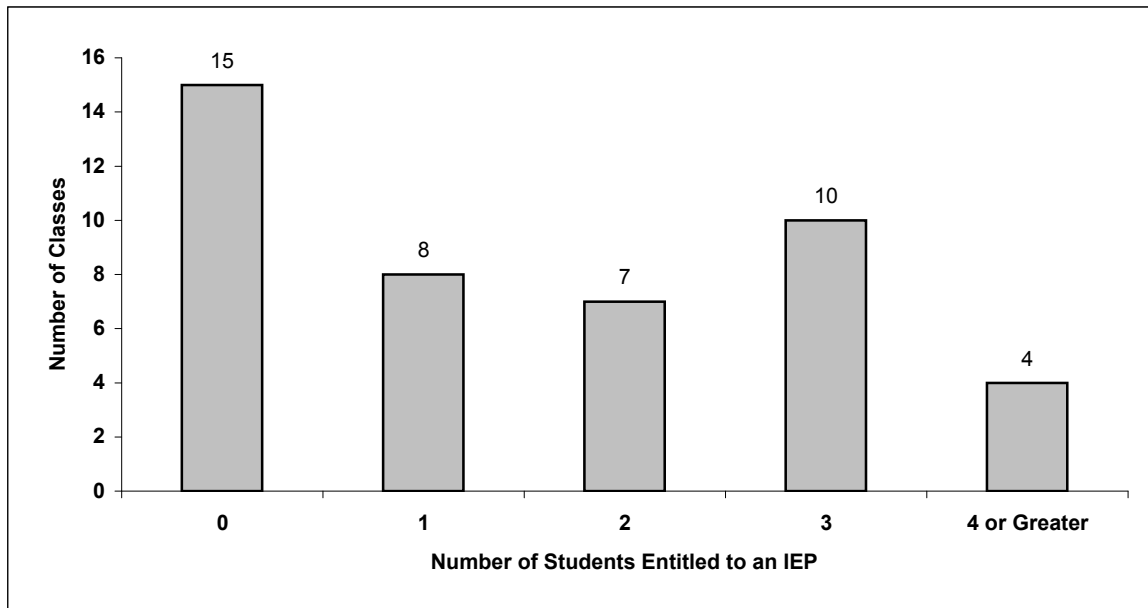
Number of Reported Classes in School District	454
---	-----

District - Students Entitled to an Individual Education Plan (IEP)

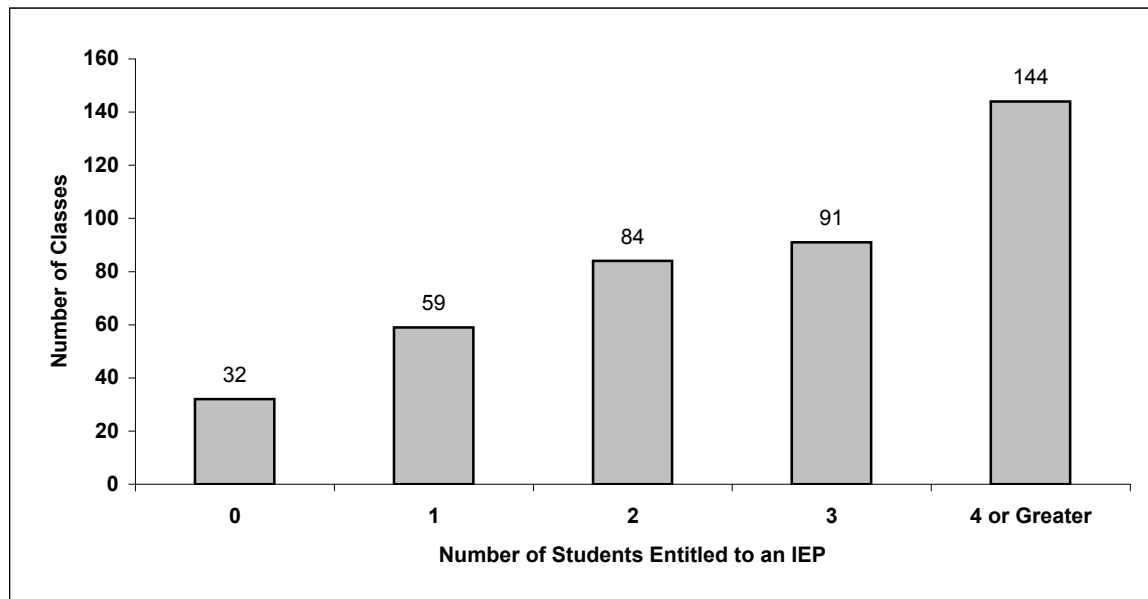
046 Sunshine Coast

Source: Class size data collection (as of September 30) from standard BC public schools.

Grades K-3 - Number of Classes in District with 'X' Number of Students Entitled to an IEP



Grades 4-12 - Number of Classes in District with 'X' Number of Students Entitled to an IEP

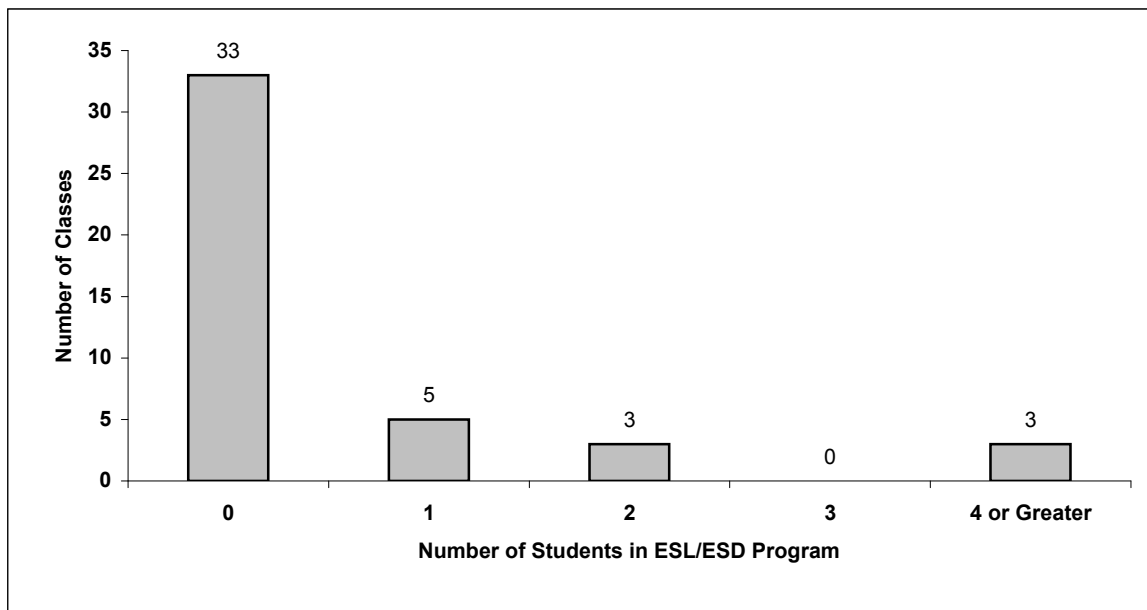


District - Students in English as a Second Language/Dialect (ESL/ESD) Program

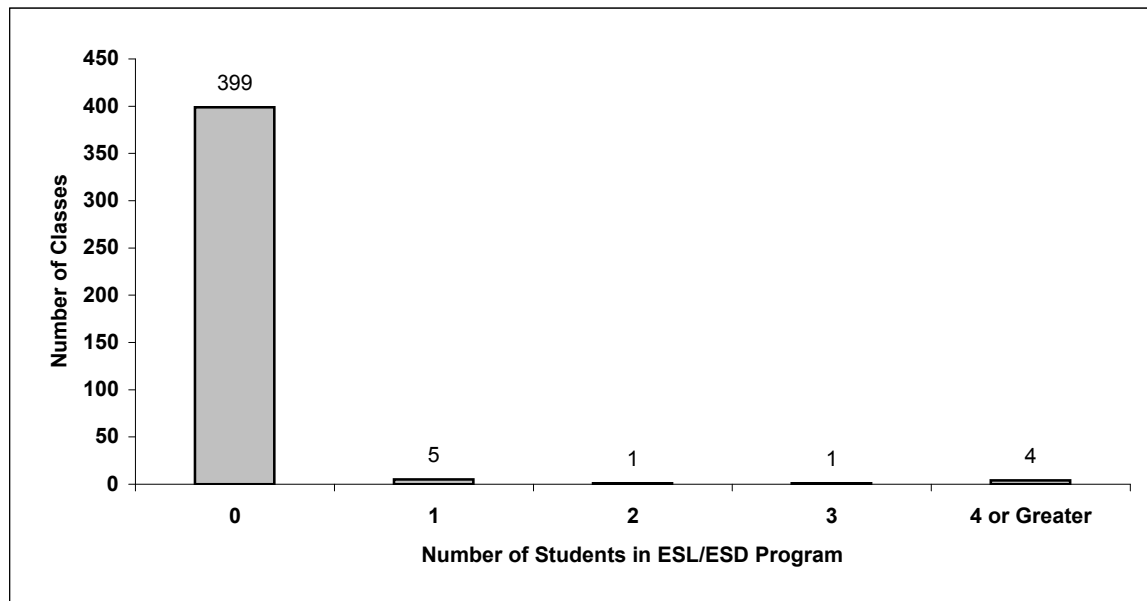
046 Sunshine Coast

Source: Class size data collection (as of September 30) from standard BC public schools.

Grades K-3 - Number of Classes in District with 'X' Number of Students in ESL/ESD Program



Grades 4-12 - Number of Classes in District with 'X' Number of Students in ESL/ESD Program



046 Sunshine Coast - Average Class Size by School

Source: Class size data collection (as of September 30) from standard BC public schools.

Ministry Code	School Name	Kindergarten	Grade 1 - 3	Grade 4 - 7	Grade 8 - 12
04646018	Cedar Grove Elementary	14.5	18.8	25.3	-
04646011	Davis Bay Elementary	14.0	17.0	24.7	-
04646001	Gibsons Elementary	19.5	19.8	25.9	-
04646013	Halfmoon Bay Elementary	11.0	21.4	25.1	-
04646022	Kinnikinnick Elementary	13.0	19.7	18.0	-
04646015	Langdale Elementary	14.0	21.0	28.0	-
04646007	Madeira Park Elementary	15.0	19.6	21.5	-
04646009	Roberts Creek Elementary	12.0	21.2	25.2	-
04646003	Sechelt Elementary	4.0	19.5	26.7	-
04646016	West Sechelt Elementary	20.0	19.7	26.7	-
04646012	Pender Harbour Elem-Secondary	-	-	25.9	18.8
04646017	Chatelech Secondary	-	-	-	24.4
04646008	Elphinstone Secondary	-	-	-	24.3

Glossary

Term	Definition / Notes
English as a Second Language/Dialect (ESL/ESD) Program	<ul style="list-style-type: none"> • A program offered to students whose primary language(s) is/are other than English, and who may require additional services.
Gifted Student	<ul style="list-style-type: none"> • A student who has exceptional gifts or talents and is defined as Category P in the Special Education Performance Reporting Groups.
Grade	<ul style="list-style-type: none"> • The assigned grade of a student on September 30.
KH	<ul style="list-style-type: none"> • Kindergarten half-time
KF	<ul style="list-style-type: none"> • Kindergarten full-time
Number of Students	<ul style="list-style-type: none"> • Student population is calculated by headcount.
Student	<ul style="list-style-type: none"> • A person enrolled in a BC school. Student populations are calculated by headcount. Students include all adult and school-aged persons who are working toward a certificate of graduation.
Student Entitled to an Individual Education Plan	<ul style="list-style-type: none"> • A student for whom an Individual Education Plan (IEP) must be designed under the Individual Education Plan order, Ministerial Order 638/95.